

# **Explosion Investigation Appendix A**

**Copyright © March 2005 All Rights Reserved**

**Ron Hopkins, CFEI, CFPS**

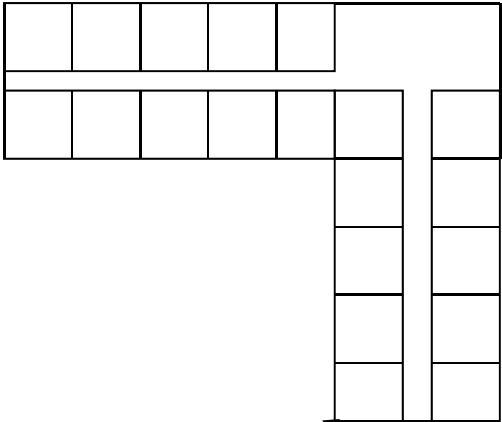
**TRACE Fire Protection and Safety Consultants, Ltd**

**123 Redwood Drive**

**Richmond, KY 40475**

**[rhopkins1@earthlink.net](mailto:rhopkins1@earthlink.net)**

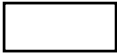
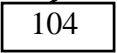
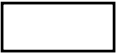
Waller Avenue



800 feet

Shed

104

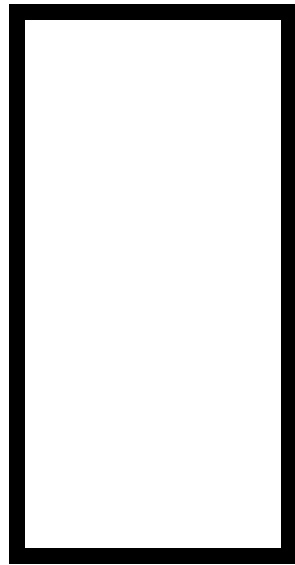


Incident Avenue



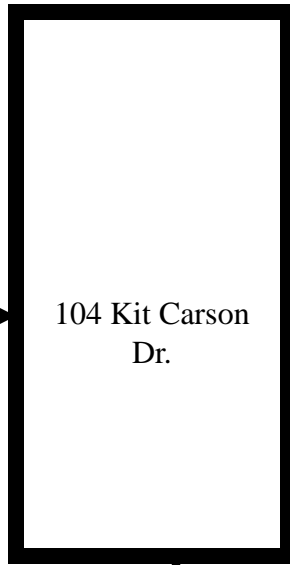
**Fuel Gas Explosion Investigation Scene**  
**104 Incident Avenue**  
**Richmond, KY 40475**  
**August 9, 200x**  
**Partial Plot Diagram of the Explosion Scene**  
**Not to Scale**  
**Ron Hopkins**

← North



White/Blue

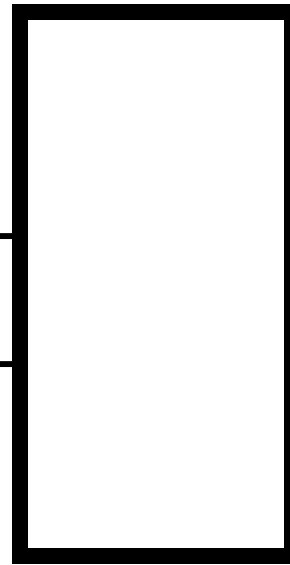
← 30' →



White

104 Kit Carson  
Dr.

↑ 20' ↓



White/Brown

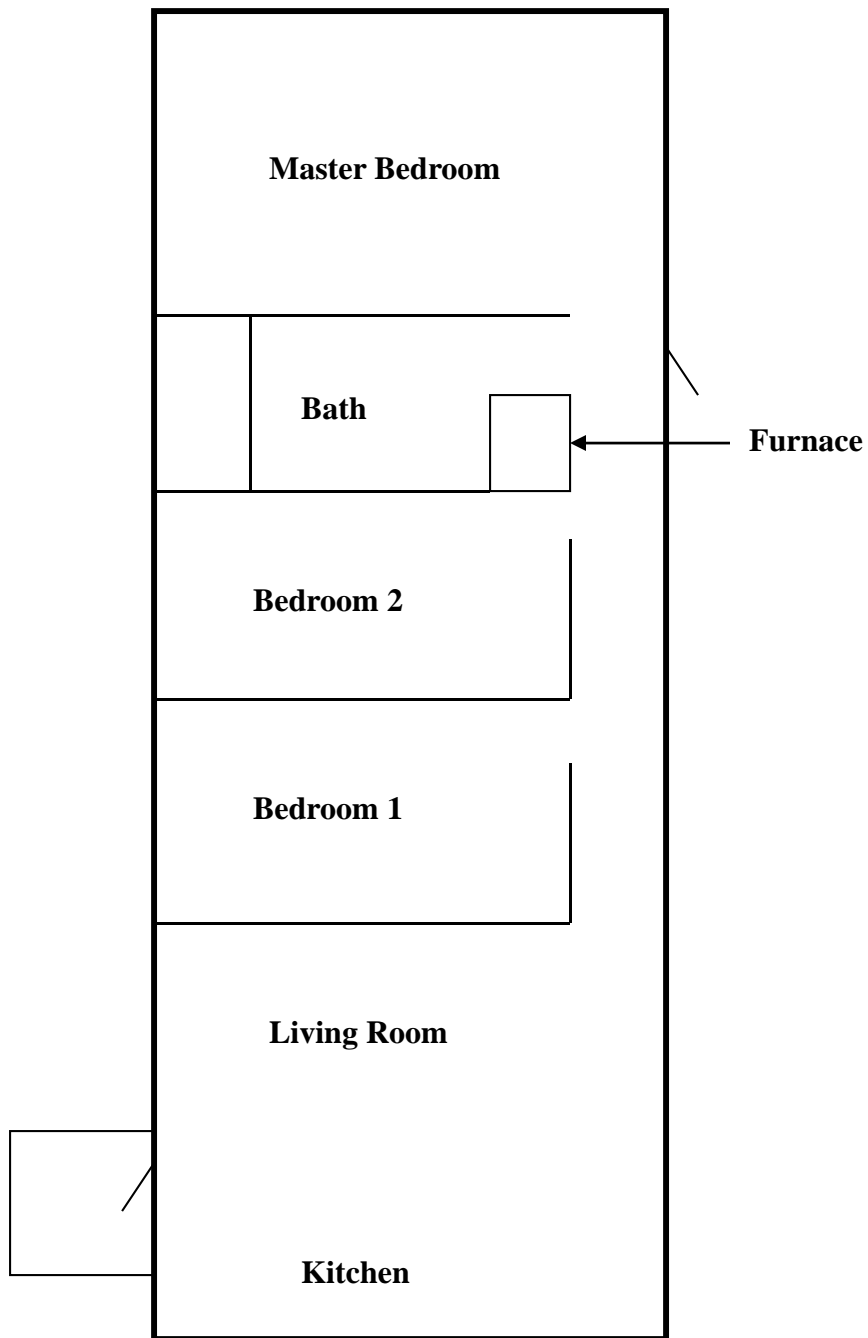


Kit Carson Drive



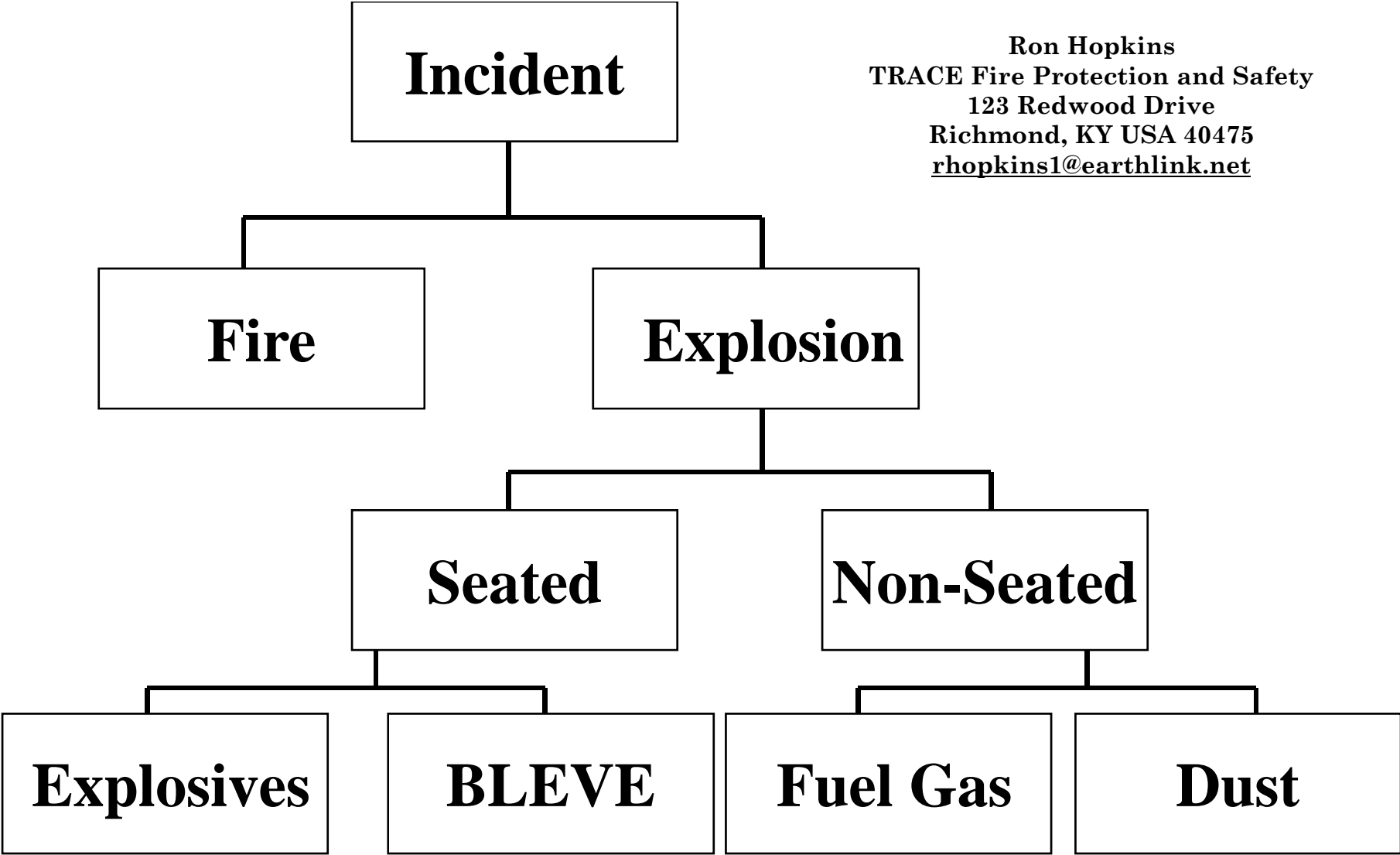
Fire Investigation  
104 Kit Carson Drive  
Richmond, KY  
August 9, 200x  
Plot Diagram of the Mobile Home Investigation  
Not to Scale  
Ron Hopkins

← North



Fire Investigation  
104 Kit Carson  
Richmond, KY  
August 9, 200x  
Plot Diagram of the Mobile Home Investigation  
Not to Scale  
Ron Hopkins

Ron Hopkins  
TRACE Fire Protection and Safety  
123 Redwood Drive  
Richmond, KY USA 40475  
[rhopkins1@earthlink.net](mailto:rhopkins1@earthlink.net)



**Low Explosive**  
**High Explosive**  
**Fuzing System**

**Container**  
**Fuel**  
**Heat Source**

**Fuel**  
**Source**  
**Ignition**

**Fuel**  
**Source**  
**Ignition**